

Castle Chronicle



Volume 9 Number 4 ■ Winter 2000

Published by the Cocumscussoc Association at Smith's Castle ■ 55 Richard Smith Drive ■ Wickford, Rhode Island 02852

Perfect Autumn Weekend Draws Crowds

Plantation Days 2000 was full of great spirit among visitors and volunteers alike. There were the familiar pleasurable traditions—crackling fires and canon fire, children dipping candles, the punt activities, food simmering over open fire and at the great hearth, white tents and colorful characters, and the scent of the last rose of summer in the 18th century garden. The Junior Docents provided a fresh thrust with their Apothecary, and there were many new volunteers dressed in period clothing for the first time. New cooks apprenticed over hot fires producing mouth-watering flavors. In short, it was a good blend of the traditional and the new.

On behalf of the Cocumscussoc Association, coordinators Anne and Dick Bowen, Betty and Al Fenik, and Barbara and Bill Carey extend sincere thanks to our nearly 100 volunteers, including Castle members, Boy and Girl Scouts, and community volunteers. Especially appreciated are the following leaders who coordinated details and volunteer efforts in specific assignment areas: Candace Bengtson, Jan and Dick Breault, Shirley Burnham, Jean Chapman, John



Photo by Lou Sansone.



Photo by Lorrie MacGowan.



Photo by Lou Sansone.

Chase, Will Cummer, Louise Duckworth, Linda Eppich, Betty and David Follansbee, Joyce Fuller, Trish Harmon, Bob Holland, Diane Long, Audrey and Bill Moncrieff, Bud Nannig, Bob Pease, Jim Peters, Lara Seaberg, Bob and Mary Shillaber, Nancy and George Sprague, and Don Steinman.

We also thank Chris Gardner, a North Kingstown High School student, for videotaping, David Burnham for providing hay, Tom Sandham for loaning the cider press, and Russell Boothroyd for use of the dining fly. We appreciate the donations of Tockwotton Farm, Reynold's Farm Stand, Shaw's, and Dave's for contributions to the open fire cooking demonstration and meal. Thank you to Steere Orchards in Smithfield for donating the apples.

Last but not least, we thank the 145 reenactors who gave of their time and expertise to help bring the past to life for this annual event. The total number of volunteers making this weekend happen nears 250! Sincere thanks to all!

Readers interested in helping with this event next year, call 294-3521 and join the Plantation Days 2001 coordinating committee! ■

Inside

- 2 President's Note
- 3 Committee Reports
- 4 Two R.I. Stone-enders
- 5 New Brochures
- 6 Murdered by His Wife
- 7 Volunteers Needed
- 8 Christmas Events

Volunteer Hours for 2000—We're Waiting to Hear from You

We're gearing up for an avalanche of volunteer hours reports for 2000. Judging from what we've witnessed, the number of hours given by all of you in good work for the Castle is phenomenal! **Please**, if you don't have a sheet to report your hours, just fill in the form below and mail it back to the office or call 294-3521 to report. Remember, no amount of time is too small. If you worked even one hour at one event, that time can be significant in the overall grand total. Due date is January 31, 2001, but mail your report as soon as you have completed your last volunteer work for 2000. Thanks in advance for your service hours and your report. We couldn't do it without you. ■



Name _____

Total Volunteer Hours for Smith's Castle in 2000 _____

Mail to Smith's Castle, 55 Richard Smith Dr., Wickford, RI 02852 Thank you!

Note from the President

Since this is the last issue of the *Castle Chronicle* for the year 2000, we should look back and review the many accomplishments that have been completed since January. Articles in the *Chronicle* have described the many activities in detail, along with the names of the many, many volunteers that made it all happen. We are indeed fortunate to have such a dedicated group of folks. I know the members of the board join me in an expression of gratitude to all the remarkable individuals who have worked so hard to achieve the goals of the Castle.

This fall, the trustees approved the structure for this year's member-guest holiday celebration to be held Friday, December 8. A gala evening is being planned by a dedicated group of "social" workers, and I am sure everyone who attends will be impressed. The Castle looks particularly beautiful when decorated for Christmas. A notice of the event is already in your hands. Please make your reservations soon (first come, first served) as only 100 folks can be accommodated.

The net proceeds from the Christmas Party will be earmarked for the preservation of the various trees on the property for future generations to enjoy. Last spring, an arborist examined the trees and made a number of recommendations to improve their health and condition. We are obligated to take the best possible care of all our resources!

Enjoy the Holiday Season! I look forward to seeing you at the member-guest holiday celebration on December 8.

—Dick Bowen

From the Annex Window

Anyone peering out this window could not help but marvel at the dedication of the volunteers who during the season help us serve our visitors. A big thanks goes to all: Joyce Fuller and Trish Lopez for scheduling the essential docent staff for our general and special appointment tours; Jan Breault for organizing and staffing highly successful school tours and trunk shows; Audrey Moncrieff for lovingly maintaining the garden; Dick Breault for efficiently supervising the care of the grounds; Candace Bengtson for creatively managing the Gift Shop; and Diane Long and Trish Harmon for guiding the lively Junior Docent program.

Here are the volunteer women, men, and youth whom we can all thank for our museum interpretative work both at the Castle and "on the road" for Y2K: Candace Bengtson, Sandra Bernier, Nancy Birch, Carol Bozarth, Jan Breault, Janice Brown, Shirley Burnham, Nicole Bush, Jean Chapman, John Chase, Ryan Cranston, Louise Duckworth, Elinor Dykstra, Betty Fenik, Betty Follansbee, Joyce Fuller, Patricia and Sarah Harmon, Louise Heard, Hilary Hurdis, Freida King, Skip Kingsley, Nicholas LaFleur, Diane and Rebecca Long, Brielle Long, Audrey Moncrieff, Cay Mulcare, June O'Neil, Anne Palmer, Bette Lou Pease, Jan Post, Eunice Pratt, Betty Sue Reed, Cathe Rezendes, Louise Richter, Wilfred Royle, Lara Seaberg, Bethany Seavey, Mary Shillaber, Nancy Sprague, Marge Swift, and Lee Williams. Bountiful thank-yous to all of you—your many hands, hearts, and minds are doing generous good work for Smith's Castle!

—Barbara Carey

President
Richard M. Bowen, Jr.
Vice President
Alex Fenik
Treasurer
Mary Shillaber
Secretary
Betty Fenik
Past President
Bette Lou Pease
Board of Trustees
Nancy Birch
Jan Breault
David Callaghan
Doris Dion
Louise Duckworth
Linda Eppich
William Ferrante
Joyce Fuller
Pat Labrie
Urban Nannig
James Peters
Cathy I. Shippee
Alfred D. Steinman
James C. Sullivan
Mary Turkel
Albert R. Vanderbilt
Lee Williams
Richard Z.
Zimmermann, Jr.

Resident Manager
Barbara Carey
Managing Editor
Urban (Bud) Nannig
Editors
Anne Bowen
Barbara Carey
Bill Carey
Neil Dunay
Production Assistant
Roberta Hale
Graphic Designer
Darrell McIntire

These figures reflect new and renewed members and include all memberships received on or after Plantation Days, 1999.

(As of October 30, 2000)

Nonbusiness membership units: (individual, family, patron, sustaining, and life members)	267
Business membership units:	10
Membership receipts to date:	\$9,640.

Budgeted income for 2000 is \$15,000, including business and nonbusiness units. ■

Welcome New Members

Virginia Brewer Roger Greene & Diane Tucker Ellen Jacke Don Lynch Joanne & Elizabeth McCarthy Rick Nagele & Sarah Bliven Kristen Netro	Dr. John & Mary Salamone Geoffrey Skog Edward Swirka Richard & Linda Tammaro Katherine Titchen Mary and Roger Turkel join the very special group of life members giving ex- emplary support to Smith's Castle. Thank you!
---	--

Hearty Pats on the Back to...

Each and every member and community volunteer who has helped make the year 2000 a great one for Smith's Castle. We wouldn't be where we are today without your support. We hope being a volunteer at the Castle has been fulfilling for you too! ■

Committee Reports

Docents

The Docents have been exceptionally busy this summer, not only giving traditional tours, but also guiding educational tours for school children, and participating in special events. The Docents assisted valiantly with the Strawberry Festival, Spring Days on the Plantation, and Plantation Days.

We have elected new officers. Jan Brown will co-chair the Docents with Joyce Fuller. John Chase will oversee the gift shop, and Shirley Burnham will continue as recording secretary and Jan Breault as chair of the Education Committee.

Candace Bengtson and Trish Lopez are stepping down—Candace as head of the gift shop, and Trish as co-chair of the Docents. They have both done brilliantly and deserve our thanks for their hard work—as do all the docents for their tireless hours of cheerful volunteer service. ■

—Joyce Fuller

Education

September and October are usually the “slow down” months at the Castle, but not for the Education Committee. We will have had over 1000 students of all ages visit the Castle this year.

This October we introduced a fall coffee hour series for Saturday morning, “Coffee and a Taste of History.” Dick Donnelly, the Rhode Island Johnny-cake Man, treated us to several different types of johnnycakes. John McNiff, Roger Williams National Memorial Park Ranger, gave a wonderful performance as William Blackstone. Betty Mencucci, a northern Rhode Island beekeeper, rounded out the series by sharing her knowledge of beekeeping and honey extraction—and a taste of delicious honey cream. The programs were well attended, and we plan another series for next year.

Education Committee members Bob Shillaber, Louise Duckworth, Martha Dwyer, Ann Prokopowicz, Cathy Shippee, Barbara Carey, and Jan Breault made these programs possible. ■

—Jan Breault

Grounds

The grounds have looked very nice this year thanks to the professional help of Jon Bengtson and numerous volunteers who have helped maintain the property. We extend special thanks to Audrey Moncrieff and her crew of Master Gardeners for the wonderful job they have done in the 18th century garden. ■

—Dick Breault

Junior Docents

A new junior docent group has started with great enthusiasm. This younger group consists of six children in grades 5–7: Heather Harmon, Stephanie Bush, Abigail and Molly Seaberg, Eric Cranston, and Elizabeth McCarthy.

For Christmas at the Castle they will prepare coffin balls out of limes and oranges and make ornaments out of gingerbread. This group will take over the games that the older group had fun with at past events. The new members are now all accomplished players of Nine Men Morris!

They will be a great asset to the Smith’s Castle program. Please welcome them as you have their older counterparts.

The elder Junior Docents ran a successful apothecary during Plantation Days based on their research on 18th century medicine. They took their apothecary show on the road to grade school children at the North Kingstown Free Library in November. This program was followed by a tour of the Castle for the participating children and their parents.

The group is working on seasonal crafts to be featured during Christmas at the Castle. ■

—Trish Harmon and Diane Long

Membership

The membership committee has begun a drive to increase the number of business members. Below is a description of annual business membership levels and benefits. To participate contact Barbara Carey at 294-3521 or Jim Sullivan at 294-9556. ■

—Jim Sullivan

The Updike Family \$100

- One family card for employee use, providing admission to guided house tours and Plantation Days
- Gift Shop discounts
- Recognition in local news media and in public meeting room at the Castle
- Smith’s Castle newsletter, *The Castle Chronicle*
- Window decal
- Tax credit as law allows
- One free business card ad in *The Castle Chronicle*

The Richard Smith Family \$250

- All of the Updike Family benefits, plus . . .
- Free specially arranged tours for business guests

- Reduced fee for use of the meeting room
- Two guest passes to special receptions and events
- Two free business card ads in *The Castle Chronicle*

Roger and Mary Williams \$500

- All of the Richard Smith Family benefits, plus . . .
- Free use of meeting room and house tours for small group meetings
- Four guest passes to special receptions and events
- Special mention in promotional literature and event programs
- Four free business card ads in *The Castle Chronicle*

Smith's Castle & Two Other 17th-Century Houses:

Clemence-Irons House circa 1680
38 George Waterman Road
Johnston, R.I.

Eleazer Arnold House circa 1687
487 Great Road
Lincoln, R.I.

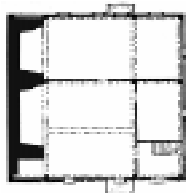


Figure 1. The floorplan of the Clemence-Irons house shows how stone-enders grew from one room (at the lower left) to multiple rooms added to the rear and side.

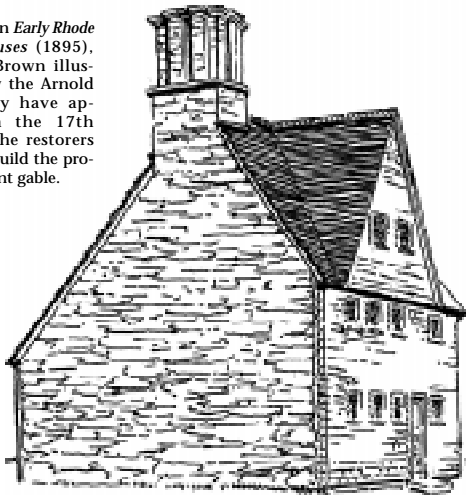


Figure 2. Like Clemence-Irons, the Arnold house evolved from a one-room, one-fireplace plan to side-by-side fireplaces with multiple rooms. The rooms at the rear were added in the 18th century and removed during restoration.

Smith's Castle is one of only a handful of 17th-century houses still standing in Rhode Island. Two other notable museum houses of the era are the Clemence-Irons House (c. 1680) in Johnston and the Eleazer Arnold House (c. 1687) in Lincoln, both owned by the Society for the Preservation of New England Antiquities (SPNEA).

In contrast to the Smith's Castle central chimney plan, the Clemence-Irons and Arnold houses are rare examples of Rhode Island "stone-enders." These houses, with two massive stone fireplaces spanning an entire side of the house and capped with pilastered stone chimneys, are thought to derive from a building tradition from western counties in England. The two stone-enders have similar floor plans, with four rooms on the first floor: two rooms directly next to the fireplaces at one side and two rooms adjoining these rooms (see Figs. 1 and 2).

Figure 3. In *Early Rhode Island Houses* (1895), Isham & Brown illustrated how the Arnold house may have appeared in the 17th century. The restorers did not rebuild the protruding front gable.



The Clemence-Irons house was typical in its one-and-a-half story construction, but the Arnold house rises a full two-and-a-half stories (see Figs. 3 and 4).

Smith's Castle and the two SPNEA properties share some historical threads in their 20th-century restorations, including ties to two leading preservationists of the era, Norman M. Isham and John Hutchins Cady. Norman Isham (1864–1943) ranks among the earliest architectural historians and preservationists in Rhode Island. He was trained at Brown University and was a North Kingstown resident for many years of his life. Isham and colleague Albert F. Brown published a detailed architectural analysis of Cocumscussoc in their 1895 *Early Rhode Island Houses*. In the late 1920s, Isham stabilized Smith's Castle and partially restored the fireplace in the keeping room.

Providence architect and preservationist John Hutchins Cady (1881–1967) wrote an historical and architectural description of Cocumscussoc in the January 1949 issue of SPNEA's *Olde-Time New England*, and he directed the Castle's restoration from 1951 to 1956.

The first of the three houses to be fully restored was the Clemence-Irons House in 1938. Over the centuries, a succession of owners had added to the house and subdivided its rooms, resulting in a 13-room structure by the early 20th century. Recognizing its architectural significance and concerned about its preservation, Henry Sharpe, Ellen Sharpe, and Louisa Sharpe Metcalf (brother and sisters) purchased the property and commissioned Isham and Cady to restore the house.

Isham and Cady dismantled the Clemence-Irons house to its timber frame and reassembled and rebuilt the house to their vision of how it would have appeared in 1680. The house today, SPNEA

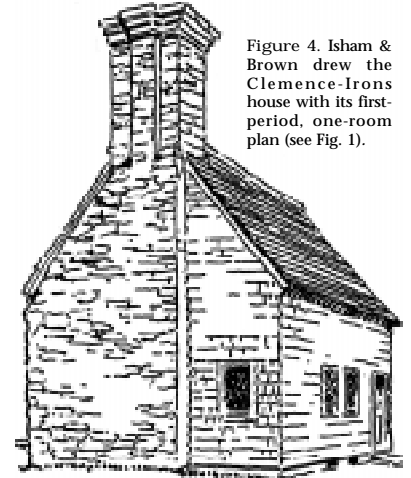


Figure 4. Isham & Brown drew the Clemence-Irons house with its first-period, one-room plan (see Fig. 1).

interpreters say, is "about half 1680 and half 1938." SPNEA presents the Clemence-Irons house as a 1938 restoration of a 17th-century house. In fact, when SPNEA conservators make repairs to the house, they try to stay true to the 1938 restoration rather than impose today's views of how the structure might have appeared in 1680. SPNEA even exhibits Isham-designed furnishings: two bedsteads, a trestle table, a hutch, and banister-back chairs. None of the pieces today are considered accurate representations of furniture of the period.

In restoring the Clemence-Irons House, Isham relied heavily on his experience in studying and stabilizing the Eleazer Arnold House in Lincoln in 1920. The Arnold house, however, was not fully restored until 1950. At that time, Russell H. Kettell undertook a complete structural rehabilitation. Like Isham and Cady at the Clemence-Irons house, Kettell removed many 18th- and 19th-century additions to the Arnold house to return the façade and interior to his vision of how the home would have appeared in the 17th century. These renovations included removing plastered walls and sash windows and replacing them with wood paneling (based on fragments

Common Historical Threads



Figure 5. Reproduction 17th-century paneling in the Richard Smith Jr. Room replaced paneling installed by Daniel Updike in the 18th century.

found in the house) and lead casement windows. Kettell, however, left intact some later features on the rear of the house.

The Richard Smith Jr. room at Smith's Castle experienced a similar restoration. After discovering fragments of 17th-century paneling, restorers removed mid-18th-century plaster, paneling, and casings and replicated the older paneling throughout the room (see Fig. 5).

Any Cocumscussoc Association members who visit the Clemence-Irons and Eleazer Arnold houses will immediately notice the similarity among the great halls in the two latter houses and the Richard Smith Jr. room at Cocumscussoc. The dark vertical paneling and the large chamfered summer beam are typical of 17th-century New England architecture.

Smith's Castle and the Arnold House also share ghosts in the attic—that is, evidence of diagonal beams that supported part of the gables that extended from their façades in the 17th century. Smith's Castle is believed to have had two attic gables flanking a projecting central gabled "porch" (see Fig. 6). The Arnold House had one gable. For reasons not clear, restorers of the Arnold house did not replicate the 17th-century gable, although Norman Isham had sketched how it might have appeared (fig. 3).

Unlike Smith's Castle, the two SPNEA house museums are not furnished to the period and do not have costumed docents. At the Arnold House, the resident manager—who lives in a private section of the house museum—gives tours, and most of the rooms are bare. SPNEA representatives give tours of the Clemence-Irons House, which also is not furnished, except for the few Isham-designed pieces.

Public hours are rare at these two houses: 1:00–5:00 pm every second Sunday, June–October. Tours are also available by special appointment. Call (617) 227-3957 x-267. ■

—Neil Dunay

New Castle Brochures Hit the Stands

Grand kudos to volunteers Darrell McIntire for outstanding graphic design and Neil Dunay for significant research and editorial work on the two new full color Smith's Castle brochures—the general history brochure and the 18th century garden brochure—are now being distributed.

If you haven't seen them, you are in for a delightful surprise! Rich in photographs and drawings, the brochures entice visitors while documenting the historic importance and beauty of Smith's Castle and its garden. Watch the mail for your copies after the first of the year.

Mystery solved. The cover of the garden brochure shows a woman in period dress sitting on the garden bench, but the identities of the subject and the photographer were unknown. Imagine the surprise of Lorrie MacGowan, former Smith's Castle steward who now lives in Arizona, when she picked up the new brochure and saw herself on the cover!

We would like to extend our appreciation to both Lorrie and the photographer, her daughter Laurie Warner of Germantown, Wisconsin. Thank you both! ■



Figure 6. The house built by Richard Smith Jr., circa 1678, likely incorporated twin gables that flanked a central gabled porch. Drawing by Clifford Renshaw.



Photo by Dick Breault.

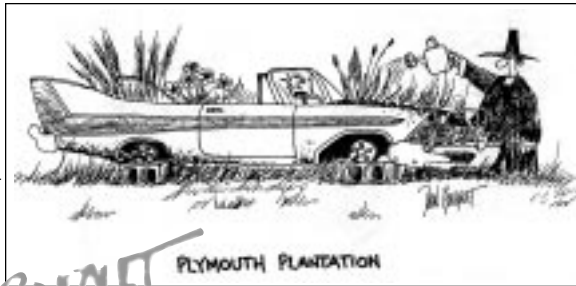
Felicity Draws Continued Interest

Felicity, our American Girl doll, continues to entice old and young who hope that she will become theirs. As of this writing, we have sold over 1000 tickets, totaling more than \$1,000. All proceeds from this fund raising activity will benefit the work of the education program.

The drawing will be held at the Christmas Party, Friday, December 8. Tickets can be purchased that

night as well as during the Christmas at the Castle open house on December 2 and 3.

We are very grateful to Jan and Dick Breault for their generous fund raising gift of a Felicity doll for the second year in a row. Also, Doris Armstrong has again provided a beautiful handmade outfit as an additional prize to the winner. Thank you all for your steadfast support of the Castle. ■



© Don Bousquet

Hearth Class Trains New Cooks

In the fall, Castle member Bill Moncrieff conducted classes for members interested in learning to cook at our historic hearth. The instruction included history and construction of the hearth, basics of fire building and fire management, techniques, safety precaution necessary for open hearth food preparation, and the use and care of the cast iron implements.

This instruction has enabled Carol Bozarth and Cathe Rezendes to join our hearth cooking team of Shirley Burnham, Jean Chapman, Bill Moncrieff, Cay Mulcare, and Marge Swift. Many hands make light work, as they say!

We thank all these volunteers for providing hearth cooking demonstrations for our special events visitors. If readers are interested in learning to work at the hearth, please call 294-3521. ■

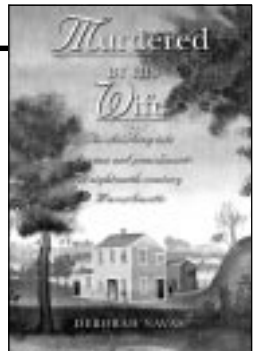
Book Review

Murdered by His Wife

A History with Documentation of the Joshua Spooner Murder and Execution of His Wife Bathsheba, Who Was Hanged in Worcester, Mass.

Deborah Navas

University of Massachusetts Press, 1999, 200 pp. hard cover



On July 2, 1778, South County neighbor Thomas B. "Nailer Tom" Hazard (1756-1845) wrote in his authoritative journal:

"Went to [Worcester] town, and there was executed for murder James Buckman, Ira Rose, Wm. Brooks, and Bashaba Spooner. They were turned off at 5 o'clock."

Nailer Tom was describing an event that had captivated New Englanders and drew a crowd of 5,000 spectators. In March 1778, Joshua Spooner of Brookfield, Mass. was beaten to death and his body stuffed down a well. Four people were hanged for the crime: two British soldiers, a young continental soldier, and the victim's wife, Bathsheba Spooner.

In *Murdered by His Wife*, Deborah Navas follows the progression of events that led up to the murder and the trial and execution of its conspirators. From contemporary documents

and newspaper accounts, Navas weaves a story of intrigue set against the cultural and political life in America as it evolved from colony to nation.

The author examines the genealogical roots of the victim and his plotting wife, the Tory affiliation of Bathsheba's father that prejudiced sentiment against her, and the burden of colonial gender roles that may have motivated her crime. Of particular note is Bathsheba's pregnancy at the time of her conviction and the refusal of the state to stay her execution until the birth of the child.

Murdered by His Wife has a scholarly tone that may be more difficult reading than standard best-selling fiction, but it is highly recommended for anyone interested in the social history of 18th-century New England and what may be described as the crime of that century. ■

—Neil Dunay

Garden Workers and Youth Leaders Sought New Docents Needed

Some unique volunteer opportunities have arisen that may have compelling interest for our readers.

Audrey Moncrieff, our dedicated and talented 18th century garden manager for an incredible eight years, needs a breather to devote time to her own beautiful gardens. We can hardly begin to express adequate appreciation for Audrey's hard work and devotion to this task.

It will be difficult to fill her garden shoes alone, so we're looking for a committee of gardeners to plan future management of this Castle treasure. Audrey will assist in the transition to new leadership.

We also need additional leaders for our Jr. Docent program to help conduct weekly meetings and plan

activities. These are great kids dedicated to learning about history and serving the Castle with their time and knowledge. A full-time volunteer commitment is not required. Let's keep these kids and their programs going and growing!

Also, with the wonderful gift of new young families in our membership comes a need for childcare. We are looking for a volunteer in the North Kingstown area who can occasionally care for a toddler so Mom and Dad can docent, attend meetings, and guide school tours.

Staffing these or other volunteer jobs can make a difference for the Smith's Castle family and for you too. Please consider how you can help and call 294-3521. ■

Smith's Castle needs additional Docents to staff guided tours for general visitors and for our growing number of school tours. In 2000 we augmented the docent's ranks with a number of delightful, hard-working men and women. These volunteers have made a significant difference in sharing the load.

Docenting is quite rewarding. For people with an interest in interpreting our rich history and interacting with people of all ages, it's great fun. A background in local history is not required, but a willingness to learn is essential. Training and information is provided at no charge. Please call 294-3521 for more information. ■

Castle Windows Ready for Winter Winds

Smith's Castle now has been fitted with long-awaited storms and screens. This custom-made equipment was built and installed under the supervision of Tom Haling of New England Glass and Mirror in Norwich, Conn. The Champlin Foundations generously provided the funding.

It was difficult to find a company that could produce appropriate storms and screens. No two Castle windows are exactly the same measure and a simple style was essential to maintain the low profile appearance appropriate to this historic structure. The custom innovative design has become a prototype for windows on other historic buildings in the area.

The storms and screens both are full length/full view, and the aluminum frames are painted to match the house. They are unobtrusive, attractive, easily removable from the inside, and easily maintained.

Sincere thank-yous go to all the trustees who faithfully and persistently pursued this project: Pete



Dick Bowen helps Tom Haling of New England Glass and Mirror install new storms and screens on Castle windows. Photo by Barbara Carey.

Vanderbilt, Richard Zimmermann, Al Fenik, Mary Turkel, and Dick Bowen, who gets a special nod for working so closely with Tom Haling and making many a trip to Connecticut to bring this project to completion. ■

Admission Increased to Keep in Step

To keep Castle guided tour rates in line with area museums, the trustees have voted to increase the 2001 adult admission to \$4.00. The price remains at \$1.00 for children 6 to 12 years of age. The minimum charge for a special appointment tour outside regular operating hours is \$15.00. The general admission cost will vary for special events and other activities. ■

Castle Gift Shop
Find that just-perfect gift!

Christmas at the Castle Hours
Noon to 4 pm
Saturday, December 2
Sunday, December 3

Bring your current membership card for your 10 percent membership discount

Holiday Events at Smith's Castle Make for Busy December

Christmas at the Castle

Saturday & Sunday, December 2 & 3,
Noon to 4 pm. Admission free.

It's time to start getting ready for our Christmas at the Castle Open House for the community. The elves have been sooo busy...

- planning live music, games, crafts, and refreshments for your enjoyment,
- collecting greens and a tree to decorate,
- putting in a call to Father Christmas to ensure his presence, and
- asking members to donate to our bake sale (an elf will be calling you).

Mark your calendars. To help out, call the Castle at 294-3521. (Oh yes, our elves are better known as Docents) ■

—Bette Lou Pease

Member-Guest Holiday Party

Friday, December 8, 6 to 8 pm, Admission: \$25 per person. RSVP 294-3521.

A members' holiday party will be a fitting event to close a wonderful year at Smith's Castle.

Attendees will find musical entertainment, decked halls, cozy fires, and sumptuous elegant fare—all setting the mood for greeting friends and neighbors.

Treat a guest to a memorable evening. Introduce a friend or a family member to Smith's Castle at its holiday finest.

All proceeds from the event will be used for the care and preservation of the trees on the Castle grounds. Call today to secure your reservation. Space is limited. ■

Chamber Business After Hours

Wednesday, December 6, 5:30pm.
Admission: gift donation.

The membership committee and Affiliated Insurance Managers are sponsoring a business after hours for the North Kingstown Chamber of Commerce at Smith's Castle. This event brings representatives of local businesses together to network for business and community development. Attendees are requested to bring a gift or a town wide gift certificate for needy teenagers. ■



Our Sympathy

The *Chronicle* has been notified of the deaths of James Armstrong and Ralph Vale, both of North Kingstown. On behalf of the membership, we extend sincere sympathy to these families.

Nonprofit org.
U.S. Postage
PAID
N. Kingstown, RI
Permit No. 56

CHANGE SERVICE REQUESTED

The Cocumscussoc Association
55 Richard Smith Drive
Wickford, RI 02852-4414